


# MULTI-BAND IT'S A NO BRAINER

WITH AVIAT'S SINGLE- MULTI-BAND SOLUTION

YOU CAN  
SIGNIFICANTLY  
IMPROVE CAPACITY  
BY UP TO

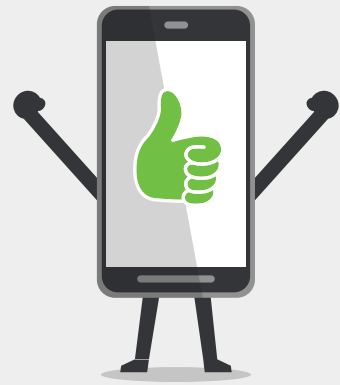
20X



[Compared to traditional microwave]





VIRTUALLY  
ELIMINATE  
OUTAGES



[Compared to E-Band]

## LET'S COMPARE

SCENARIO: ●—● 4.6mi. / 7.45km  2ft / 0.6m  Zone E

### MICROWAVE\*

MOD	Capacity Mbps	Outage Time HH:MM:SS
QPSK	75	00:00:19
16QAM	150	00:00:46
32QAM	200	00:01:14
64QAM	249	00:01:33
128QAM	319	00:02:46
256QAM	369	00:04:33
512QAM	415	00:07:47
1024QAM	458	00:13:03
2048QAM	500	00:30:08
<b>4096QAM</b>	<b>531</b>	01:40:09

\*Microwave @ 15GHz, 56MHz channel

### MULTI-BAND\*

MOD	Capacity Mbps	Outage Time DAY HH:MM:SS
QPSK	<b>75</b>	<b>00:00:19</b>
16QAM	<b>150</b>	00:00:47
32QAM	<b>200</b>	00:01:16
64QAM	<b>249</b>	00:01:35
128QAM	<b>319</b>	00:02:51
256QAM	<b>369</b>	00:04:41
512QAM	<b>415</b>	00:08:01
1024QAM	<b>458</b>	00:13:30
2048QAM	<b>500</b>	00:31:39
4096QAM	<b>531</b>	01:49:01
QPSK / 4096QAM	<b>3231</b>	07:13:03
16QAM / 4096QAM	<b>5931</b>	14:49:40
32QAM / 4096QAM	<b>7331</b>	001 02:26:51
64QAM / 4096QAM	<b>8731</b>	002 04:51:48
128QAM / 4096QAM	<b>10000</b>	005 02:16:11

\*Multi-Band @ 80GHz, 2000MHz channel  
15GHz, 56MHz channel

>400 Mbit/s capacity at  
**99.9999%**  
availability

Multi-Band  
**7hrs**  
More uptime

### E-BAND\*

MOD	Capacity Mbps	Outage Time DAY HH:MM:SS
QPSK	2700	<b>07:45:28</b>
16QAM	5400	14:29:10
32QAM	6800	001 01:30:36
64QAM	8200	002 02:40:43
128QAM	9900	004 18:31:01

\*Eband @ 80GHz, 2000MHz channel

Multi-Band  
more capacity  
at EACH STEP

Multi-Band  
**20X**  
Capacity



Thinking  
about  
E-Band?  
(70/80 GHz)

Thinking  
about  
microwave?  
(15/18/23 GHz)



Consider  
Multi-Band  
instead, for  
multiple hours  
more uptime  
per year

Consider  
Multi-Band  
instead, for up  
to 20x more  
capacity

BOTTOM LINE: SINGLE-BOX  
**MULTI-BAND MEANS HUGE VALUE**  
AT A COST THAT MAKES SENSE



AVIAT WTM 4800  
MULTI-BAND